

DRIVE▶RITE

AIR SUSPENSION SYSTEMS

Unit 626 Kilshane Avenue, North West Business Park, Ballycoolin, Dublin 15, Ireland

Telephone: +353 1 8612 632 Fax: +353 1 8612 647 email: info@driveriteair.com

Web: www.driveriteair.com

DR.02.012413

W21-760-2413

NISSAN NAVARA

D40 Model, 4x4 only

From 2005, ABS Vehicles Only

SEMI-AIR KIT INSTALLATION INSTRUCTIONS



Table of Contents

Table of Contents.....	2
Introduction.....	3
IMPORTANT SAFETY NOTICE	3
Special Instructions for Air Connections.....	3
Kit Contents	4
HARDWARE LIST	4
Step by Step Installation	5
Step 1: Prepare the Vehicle	5
Step 2: Prepare the Air Spring assembly	5
Step 3: Air Spring Assembly to Vehicle	6
Step 4: Routing the Air Tubing	7

Introduction

The purpose of this publication is to assist with the installation of the DR.02.012413 kit.

It is important to read and understand the entire installation guide before beginning installation or performing any maintenance, service or repair. The information here includes a hardware list and step-by-step installation information.

Drive-Rite reserves the right to make changes and improvements to its products and publications at any time. Contact Drive-Rite at +353 1 8612 632 or visit us online at www.driveriteair.com for the latest version of this manual.

IMPORTANT SAFETY NOTICE

The installation of this kit does not alter the Gross Vehicle Weight Rating (GVWR) or payload of the vehicle. Check your vehicle's owner's manual and do not exceed the maximum load listed for your vehicle.

Gross Vehicle Weight Rating = the maximum allowable weight of the fully loaded vehicle (including passengers and cargo). This number — along with other weight limits, as well as tire, rim size and inflation pressure data — is shown on the vehicle's Safety Compliance Certification Label.

Payload: The combined, maximum allowable weight of cargo and passengers that the truck is designed to carry. Payload is GVWR minus the Base Curb Weight.

Precautions

Never exceed the maximum and minimum recommended pressure limits:

- Minimum Pressure 1 Bar (14.5 p.s.i)
- Maximum Pressure 7 Bar (100 p.s.i)

NEVER DRIVE WITH DEFLATED AIRSPRINGS

Special Instructions for Air Connections

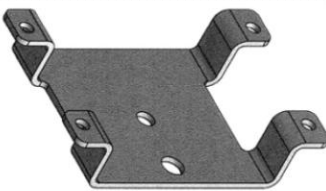



- To cut the tubing correctly an appropriate cutter must be used (not scissors)



- When inserting the tubing into the connection, it must be pushed in approximately 14mm until a 'click' is heard.
- To remove the tube, you must push the flange in on the connection and at the same time pull the tube. (No tool is necessary.)
- **ATTENTION**, when a tube is removed it is important to trim 14mm from the end before reconnection.
- It is advisable that LOCTITE or similar sealant be used on the threaded fittings.

Kit Contents

▼ HARDWARE LIST

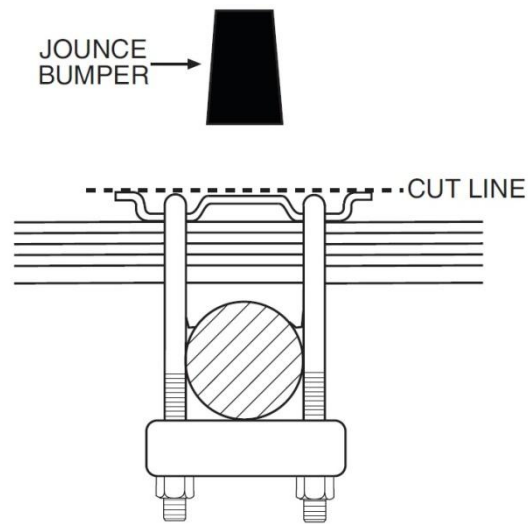
Part Name	Quantity	Picture/Description	Part #
Upper Bracket	2		100472
Lower Bracket	2		101011
Bracket Strap	4		D-3460
M10 Bail Clamp	4		3134
Cable Ties	6		9036
3/8-16 x 3" Carriage Bolt	8	Lower Bracket to Bracket Strap	3012
3/8-16 Flange Locknut	16	For Carriage Bolts	3022
5/16 Flat Washer	4	For Inflation valves	3033
5/8"-18 Jam Nut	2	Air Spring to Upper Bracket	3332
3/8-16 x 3/4 Flange Bolt	2	Air Spring to Lower Bracket	3069
1/8" - 1/4" Straight Fitting	2		3055
Inflation Valve	2		3032
T-Piece	1		3025
Airspring	2	Style 267	6397
Tubing	5m		1321-1M
Thermal Sleeve	2		2135820899

Step by Step Installation

Step 1: Prepare the Vehicle

Place the vehicle on a solid level surface. Take necessary safety precautions such as using wheel chocks when working under your vehicle.

Remove the jounce bumpers by cutting them off as close to the bracket as possible as shown in the image.

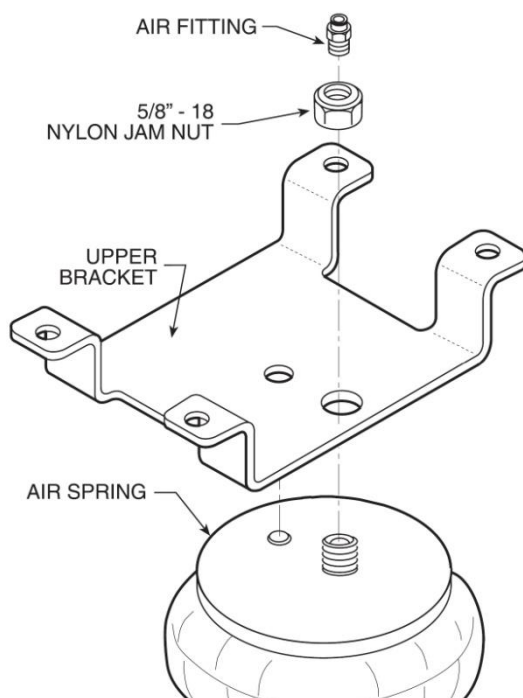


Step 2: Prepare the Air Spring assembly

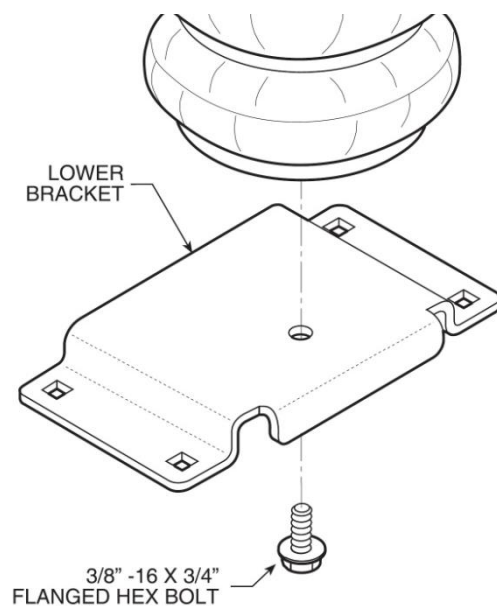
Select an upper bracket and an air spring from your kit. Attach the upper bracket to the air spring with a 5/8" nylock nut. Install the male fitting into the air spring. Tighten the air fitting securely to engage the orange thread sealant (see images below).

Attach the lower bracket to the air spring using the 3/8"-16 x 3/4" hex bolt. Tighten the bolt making sure the bracket is in the correct position (see images below).

Upper Bracket to Air Spring



Lower Bracket to Air Spring

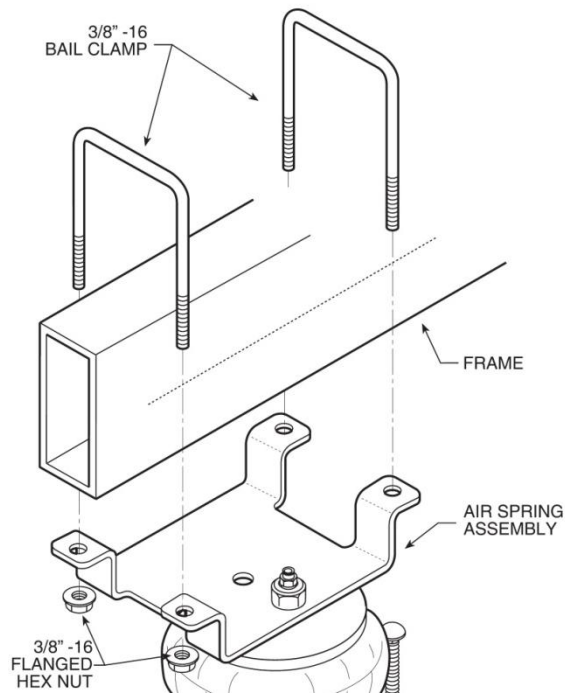


Step 3: Air Spring Assembly to Vehicle

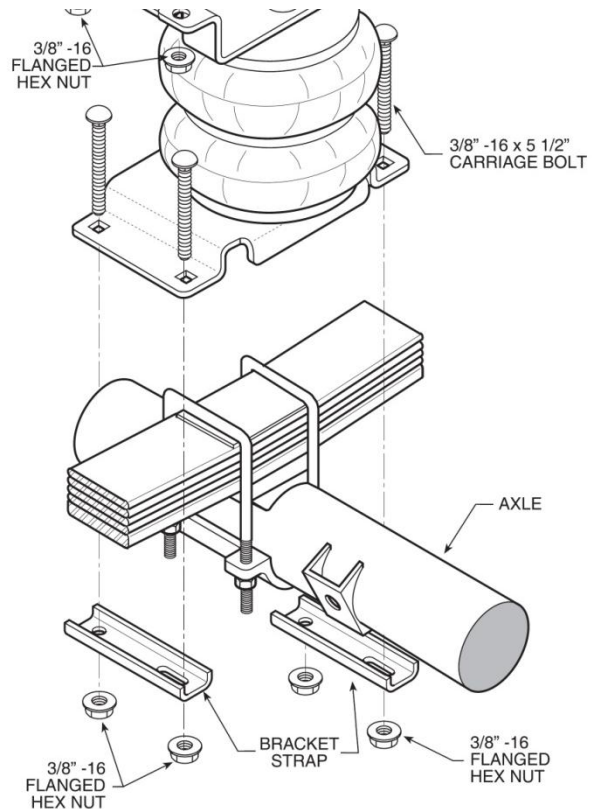
Place the preassembly on the leaf stack of the left side of the vehicle as shown in the image. (The image shows the Left Hand Side of the vehicle).

Attach the upper bracket directly beneath the frame rail using the 3/8" - 16 bail clamps and 3/8" lock nuts. Attach the lower bracket to the leaf stack using the 5 1/2" carriage bolts, 3/8" lock nuts, and bracket straps, (see image). Follow the same procedures as outlined in steps 1 through 3 for installing the right side of the vehicle.

Upper Bracket to Chassis



Lower Bracket to Axle



Step 4: Routing the Air Tubing

Cut a long length of tubing in order to connect the valve to the nearest air spring. Do the same for the opposite side. Choose whether you want separate inflation valves for each side or one valve common to both sides using the T shaped connector. Use the nylon ties provided to tie the tubing up into a safe position.

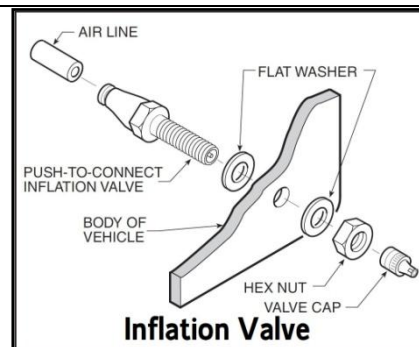


When cutting the air tube, it is vital that the tube is not cut at an angle. This could cause an air leak. It is recommended that a tube cutter or a sharp blade be used.



Drill an 8mm (5/16") hole and mount the inflation valve as shown in the diagram, pushing the valve through the hole from behind and attaching with 2 washers and a nut.

Cut the air tube to length, making sure the end is cut squarely, and push the end as far as possible into the back of the inflation valve.



IMPORTANT:

- Attach all tubing securely to the underneath of the vehicle using nylon ties.
- Do not attach to brake lines.
- Protect the tube with the sleeves provided where there are any sharp edges or sources of heat.
- Ensure all fittings are fastened to recommended torque.

Examination:

After assembly, inflate air springs and check all mounting bolts are tight. Screw all connections tight again. It must be ensured that the mounting brackets cannot move. If the plates touch the brake hose at the air springs, then these must be moved by suitable means.



TÜV SÜD AUTOMOTIVE GMBH Westendstrasse 109 D-80686 München		
Teilgutachten Nr.:	13-00986-CX-GBM-00	Seite 1 von 7
Hersteller:	Drive-Rite Ltd.	
Typ:	DR.02.012413	

TEILEGUTACHTEN
Nr. 13-00986-CX-GBM-00
TGA-Art: 8.1

über die Vorschriftsmäßigkeit eines Fahrzeuges bei bestimmungsgemäßem Ein- oder Anbau von Teilen gemäß § 19 Abs. 3 Nr. 4 StVZO

für das Teil / den Änderungsumfang : Zusatzluftfedersystem für die Hinterachse vom Typ : DR.02.012413

Ausführungen: : DR.02.012413 / DR.11.010003
: DR.02.012413 / DR.11.016110
: DR.02.012413 / DR.11.012236
: DR.02.012413 / DR.11.016112
: DR.02.012413 / DR.11.012436
: DR.02.012413 / DR.30.013332

des Herstellers : Drive-Rite Ltd.
Unit 626 Kilshane Avenue
IRL - 15 Dublin

für das Fahrzeug : Nissan Navara

0. Hinweise für den Fahrzeughalter

Unverzügliche Durchführung und Bestätigung der Änderungsabnahme:
Durch die vorgenommene Änderung erlischt die Betriebserlaubnis des Fahrzeuges, wenn nicht unverzüglich die gemäß StVZO § 19 Abs. 3 vorgeschriebene Änderungsabnahme durchgeführt und bestätigt wird oder festgelegte Auflagen nicht eingehalten werden!
Nach der Durchführung der technischen Änderung ist das Fahrzeug unter Vorlage des vorliegenden Teilgutachtens unverzüglich einem amtlich anerkannten Sachverständigen oder Prüfer einer Technischen Prüfstelle oder einem Prüflingenieur einer amtlich anerkannten Überwachungsorganisation zur Durchführung und Bestätigung der vorgeschriebenen Änderungsabnahme vorzuführen.

Einhaltung von Hinweisen und Auflagen:
Die unter III. und IV. aufgeführten Hinweise und Auflagen sind dabei zu beachten.

Mitführen von Dokumenten:
Nach der durchgeführten Abnahme ist der Nachweis mit der Bestätigung über die Änderungsabnahme mit den Fahrzeugpapieren mitzuführen und zuständigen Personen auf Verlangen vorzuzeigen; dies entfällt nach erfolgreicher Berichtigung der Fahrzeugpapiere.

Berichtigung der Fahrzeugpapiere:
Die Berichtigung der Fahrzeugpapiere durch die zuständige Zulassungsbehörde ist durch den Fahrzeughalter entsprechend der Festlegung in der Änderungsabnahme zu beantragen. Weitere Festlegungen sind der Bestätigung der ordnungsgemäßen Änderung zu entnehmen.

Akkreditiert unter DAR-Registriernummer KBA-P-00001-95
von der Akkreditierungsstelle des Kraftfahrt-Bundesamtes, Bundesrepublik Deutschland
Accredited by the designation body of Kraftfahrt-Bundesamt, Federal Republic of Germany,
registration-number: KBA-P-00001-95

TÜV Report available at www.driveriteair.com or contact Drive-Rite for details

DRIVE RITE

AIR SUSPENSION SYSTEMS

Unit 626 Kilshane Avenue, North West Business Park, Ballycoolin, Dublin 15, Ireland

Telephone: +353 1 8612 632 Fax: +353 1 8612 647 email: info@driveriteair.com

Web: www.driveriteair.com